

A Series High Range Stand-on Pallet Stacker With Initial Lift

| Characteristics | 1.1 | Manufacturer | HANGCHA GROUP CO.,LTD. | | | |
|-----------------|------|--|---------------------------------|------------------------------|------------------------------|------------------------------|
| | | 1.2 | Manufacturer's type designation | CDD12-AZ35-L CDD12-AC15-L | CDD14-AZ35-L CDD14-AC15-L | CDD16-AZ35-L CDD16-AC15-L |
| | 1.3 | Drive (Drive: electric (battery or mains), diesel, petrol, fuel gas) | electric | electric | electric | |
| | 1.4 | Operator type (hand, pedestrian, standing, seated, order-picker) | standing | standing | standing | |
| | 1.5 | Load capacity | Q (kg) | 1200 | 1400 | 1600 |
| | 1.6 | Load centre distance | C(mm) | 600 | 600 | 600 |
| | 1.8 | Load distance, centre of drive axle to fork | x(mm) | 748 | 748 | 748 |
| | 1.9 | Wheelbase | y(mm) | 1507 | 1507 | 1507 |
| Weights | 2.1 | Service weight | kg | 1295 | 1300 | 1350 |
| Wheels&Tyres | 3.1 | Tyres: solid rubber, superelastic, pneumatic, polyurethane | polyurethane | polyurethane | polyurethane | |
| | 3.2 | Tyre size, front | φ230×75 | φ230×75 | φ230×75 | |
| | 3.3 | Tyre size, rear | φ85×70 | φ85×70 | φ85×70 | |
| | 3.4 | Additional wheels (dimensions) | φ140×55 | φ140×55 | φ140×55 | |
| | 3.5 | Wheels, number front rear (x=driven wheels) | 1x+1/4 | 1x+1/4 | 1x+1/4 | |
| | 3.6 | Tread, front | b1o(mm) | 520 | 520 | 520 |
| | 3.7 | Tread, rear | b1i(mm) | 385 | 385 | 385 |
| Dimensions | 4.2 | Height, mast lowered | h1(mm) | 1932 | 1932 | 1932 |
| | 4.3 | Free lift | h2(mm) | 0 | 0 | 0 |
| | 4.4 | Lift | h3(mm) | 2700 | 2700 | 2700 |
| | 4.5 | Height, mast extended | h4(mm) | 3282 | 3282 | 3282 |
| | 4.6 | Initial lift | h5(mm) | 125 | 125 | 125 |
| | 4.15 | Height, lowered | h13(mm) | 90 | 90 | 90 |
| | 4.19 | Overall length (pedal folded) | l1(mm) | 2135 | 2135 | 2135 |
| | 4.20 | Length to face of forks | l2(mm) | 985 | 985 | 985 |
| | 4.21 | Overall width | b1(mm) | 800 | 800 | 800 |
| | 4.22 | Fork dimensions DIN ISO 2331Fork dimensions | s/e/l(mm) | 65/185/1150 | 65/185/1150 | 65/185/1150 |
| | 4.25 | Distance between fork-arms | 570 | 570 | 570 | |
| | 4.32 | Ground clearance, centre of wheelbase | m2(mm) | 25 | 25 | 25 |
| | 4.33 | Aisle width for pallets 1000 x 1200 crossways | Ast (mm) | 2600 | 2600 | 2600 |
| | 4.34 | Aisle width for pallets 800 x 1200 lengthways | Ast (mm) | 2550 | 2550 | 2550 |
| | 4.35 | Turning radius | Wa(mm) | 1745 | 1745 | 1745 |
| Performance | 5.1 | Travel speed, unladen | km/h | 7 | 7 | 7 |
| | 5.2 | Lift speed, laden/unladen | m/s | 0.135/0.210 | 0.165/0.325 | 0.135/0.250 |
| | 5.3 | Lowering speed, lade/unladen | m/s | 0.260/0.165 | 0.260/0.165 | 0.260/0.165 |
| | 5.7 | Gradeability, laden/unladen | % | 10/16 | 10/16 | 8/16 |
| | 5.10 | Service brake | | electric | electric | electric |
| Electric-engine | 6.1 | Drive motor rating S2 60 min | kW | 2.2 | 2.2 | 2.2 |
| | 6.2 | Lift motor rating at S3 15 % | kW | 2.2 | 3.2 | 3.2 |
| | 6.3 | Battery according to DIN 43531/35/36 A, B, C, no | | 4DB280 | 4DB280 | 4DB340 |
| | 6.4 | Battery voltage/nominal capacity K5 | | 24/280 | 24/280 | 24/340 |
| Other | 8.1 | Type of drive unit | | AC Control | AC Control | AC Control |

1.2t/1.4t/1.6t Mast specification

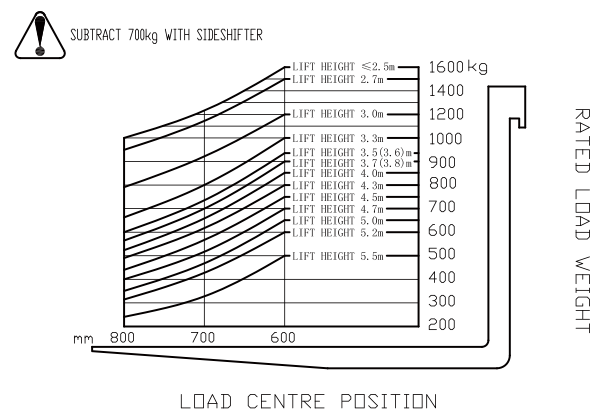
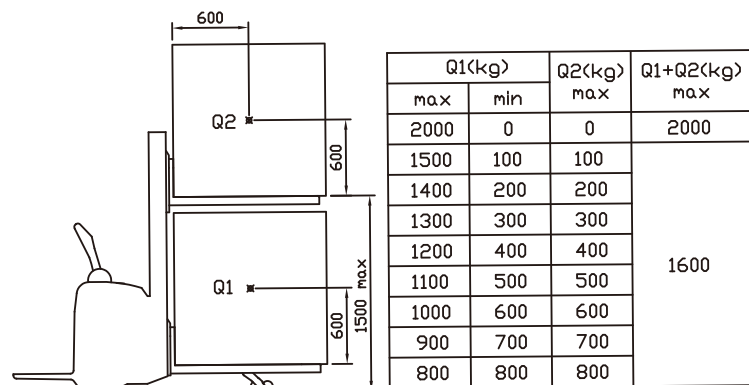
| Type | Fork lift height h3 | Max.fork height (h3+h13) | Mast lowered h1 | Mast extended h4 | Free lift height | Load capacity at 600mm | | |
|------------------------|------------------------|-----------------------------|--------------------|---------------------|------------------|------------------------|------|------|
| | | | | | | 1.2t | 1.4t | 1.6t |
| Wide view duplex mast | mm | mm | mm | mm | mm | kg | kg | kg |
| | 2000 | 2090 | 1582 | 2582 | 90 | 1200 | 1400 | 1600 |
| | 2500 | 2590 | 1832 | 3082 | 90 | 1200 | 1400 | 1600 |
| | 2700 | 2790 | 1932 | 3282 | 90 | 1200 | 1300 | 1500 |
| | 3000 | 3090 | 2082 | 3582 | 90 | 1130 | 1130 | 1200 |
| | 3300 | 3390 | 2232 | 3882 | 90 | 950 | 950 | 1000 |
| | 3500 | 3590 | 2332 | 4082 | 90 | 900 | 900 | 940 |
| | 3600 | 3690 | 2382 | 4182 | 90 | 890 | 890 | 930 |
| | 3700 | 3790 | 2432 | 4282 | 90 | 850 | 850 | 900 |
| | 3800 | 3890 | 2482 | 4382 | 90 | 840 | 840 | 890 |
| Full free duplex mast | 4000 | 4090 | 2682 | 4682 | 90 | 800 | 800 | 850 |
| | 4300 | 4390 | 2832 | 4982 | 90 | 750 | 750 | 800 |
| | 4500 | 4590 | 2932 | 5182 | 90 | 700 | 700 | 750 |
| | 2000 | 2090 | 1635 | 2635 | 1090 | 1200 | 1400 | 1600 |
| | 2500 | 2590 | 1885 | 3135 | 1340 | 1200 | 1400 | 1600 |
| | 2700 | 2790 | 1985 | 3335 | 1440 | 1200 | 1300 | 1500 |
| | 3000 | 3090 | 2135 | 3635 | 1590 | 1130 | 1130 | 1200 |
| | 3300 | 3390 | 2285 | 3935 | 1740 | 950 | 950 | 1000 |
| | 3500 | 3590 | 2385 | 4135 | 1840 | 900 | 900 | 940 |
| | 3600 | 3690 | 2435 | 4235 | 1890 | 890 | 890 | 930 |
| Full free triplex mast | 3500 | 3590 | 1884 | 4254 | 1220 | 890 | 890 | 930 |
| | 3700 | 3790 | 1949 | 4449 | 1290 | 850 | 850 | 900 |
| | 4000 | 4090 | 2049 | 4749 | 1390 | 800 | 800 | 850 |
| | 4300 | 4390 | 2149 | 5049 | 1490 | 750 | 750 | 800 |
| | 4500 | 4590 | 2199 | 5199 | 1590 | 700 | 700 | 750 |
| | 4700 | 4790 | 2299 | 5499 | 1590 | 650 | 650 | 700 |
| | 5000 | 5090 | 2394 | 5784 | 1700 | 600 | 600 | 650 |
| | 5200 | 5290 | 2449 | 5949 | 1790 | 550 | 550 | 600 |
| | 5500 | 5590 | 2549 | 6249 | 1890 | 450 | 450 | 500 |



A Series High Range Stand-on Pallet Stacker With Initial Lift

with capacities of 1,200 to 1,600kg

CAPACITY 1.6T



HANGCHA FORKLIFT CANADA INC.

Company address:
6-980 Rue Valois, Vaudreuil-Dorion,
QC, J7V 8P2, Canada

Toll Free: 877-319-HCFC (4232)
Landline: 450-319-HCFC

info@hcforkliftcanada.com
www.hcforkliftcanada.com



HANGCHA GROUP CO., LTD. reserves the right to make any changes without notice concerning colors, equipment, or specifications detailed in this brochure, or to discontinue individual models. The colors of trucks, delivered may differ slightly from those in brochures.

The World of Hangcha



A Series High Range Stand-on Pallet Stacker With Initial Lift

The A Series Pallet Stacker Truck is a new product developed for warehouse and logistics applications. With the latest AC control technology, it features excellent performance, easy operation, safety and reliability, and low maintenance cost, and is an ideal vehicle for loading, unloading, and handling palletized goods in warehouse, supermarket, and workshop. The A series pallet stacker with initial lift offers better reachability with its lifting arms.

Easy/ Efficiency/ Economy

Appearance

- / The A series pallet stacker with initial lift is completed with specialized industrial design of appearance. The entire truck features smooth lines and affluent sense of movement, with full consideration being given to ergonomics, in accord with the latest appearance design trend.
- / It is manufactured with steel plate stamping and injection molding technologies, solid and durable, in compliance with environmental requirements.



High Performance

- / Center stand-on driving mode and ESP(Electric Steering Power)system offer easier and more flexible operation.
- / The arm initial lifting function offers better reachability. The upper and lower double pallet handling design not only can meet requirements of stacking operation, but also brings higher material handling efficiency.
- / Lifting and lowering stepless speed regulation of the fork is a standard configuration.
- / The high efficiency traction motor realizes high driving speed and strong climbing performance.
- / The AC driving motor features excellent acceleration performance, outstanding climbing ability, low heat emission, and maintenance-free.
- / The latest ZAPI AC control system realizes accurate and stable control, and higher efficiency.
- / The CANBUS structure makes communication of the entire machine faster and more reliable.
- / Regenerative brake of the truck prevents it from sliding on a slope.
- / Hydraulic power unit, switches, plug connectors, battery condition meter, timer and other important parts are all of renowned domestic and abroad brands.

Comfort

- / The lower vibrational pedal offers much higher driving comfort, and reduces fatigue of long-duration operation.
- / The REMA tiller made in Germany is simple but beautiful, and all operations can be done easily with one hand.
- / The tortoise speed switch with light allows the truck to move at slow speed more conveniently, and can stack goods even in confined space.
- / The optimized truck structure guarantees excellent visibility, and easy access and exit of pallet.
- / The design of narrow body with large round corners makes the truck more suitable for operation in concentrated goods shelves, and the wedge-shaped design of truck base offers much higher passing ability.
- / Different distance between fork-arms and fork length are optional, being suitable for handling of various pallets.
- / Side roll out battery can realize easy and fast replacement (optional).

Reliability

- / Four-pivots and low-gravity-center design and the high-strength steel plate framed structure feature large residual load capacity, and long service life.
- / All plug connectors are imported and waterproof, and all cables have reliable protection, which increases reliability of electrical system significantly.
- / Non-contact proximity switch features long service life and reliable operation.
- / Electronic lifting limitation eliminates overflow of the hydraulic power unit, which is more energy efficient, and can protect the motor of power unit.
- / The hydraulic power unit features low noise, small vibration, and stable and reliable lifting and lowering.
- / Stamping molded fork has higher strength and impact resistance.
- / Power plug is fastened to truck body, which can avoid damage of plug when battery is replaced.
- / The battery is fixed securely, and battery cover is supported with flexible material, which reduces vibration and noise during operation.

Safety

- / Traveling speed will be automatically reduced after fork lifting 500mm.
- / Turning speed is automatically reduced when steering.
- / Release braking, reverse braking, and three types of emergency braking can ensure safety of traveling.
- / Anti-sliding function on slope can ensure safety of operation.
- / The belly button on top of operating handle can avoid the driver from injury effectively in case of emergency during backward driving of the pallet truck.
- / The soft landing system reduces declining speed automatically when height from ground to fork is less than 100mm, which provides effective protection for goods.

Maintenance

- / The brushless, maintenance-free AC driving motor reduces operation cost significantly.
- / The brushless, maintenance-free AC steering motor reduces operation cost significantly (optional).
- / The meter integrating battery indicator, timer, and fault self-diagnosis is convenient for maintenance.
- / All rotating shafts are equipped with lubricating sleeve and oil cup, which is convenient for maintenance and has a long service life.

Standard specification

- / AC driving motor
- / ZAPI AC controller
- / REMA tiller
- / Imported hydraulic power unit
- / Pedal
- / Emergency power off switch
- / Multi-function battery condition meter
- / Tandem load wheel
- / Initial lift 125mm
- / Fork length 1150mm
- / Outer distance between fork-arms 570mm
- / Electronic lifting limitation
- / Soft landing system
- / Multi-function handle of CAN bus
- / Horn
- / Battery
- / EPS system

Options

- / Various imported and home-made batteries
- / AC steering motor
- / Different mast height (see parameter list for details)
- / Fork length 1220/1600
- / Outer distance of forks 600/680mm
- / Side roll out battery
- / Automatic battery charger
- / Load backrest
- / Mast shield
- / Lithium battery



Rema tiller



The integrated stamping molded guardrail offers better protection for the operator



Back cover can be opened fully, and all components and parts are clear at a glance, which is very convenient for maintenance of the entire machine



Tandem load wheel